



# **The Felixstowe Society Newsletter**

**Issue Number 92**

**1 September 2009**

## **Contents**

- 2 The Felixstowe Society**
- 3 Notes from the Chairman**
- 4 Obituaries**
- 5 Thank You**
- 5 Beachwatch 2009**
- 6 Annual General Meeting 2009**
- 10 Recent development in the Port of Felixstowe**
- 11 Colonel Tomline - an alternative view**
- 12 Cruise on the River Deben**
- 13 Music in Felixstowe**
- 14 Thoughts by Malcolm Stafford**
- 15 Cliff House Estate, Bath Hill**
- 19 Felixstowe Museum**
- 20 Visit to the Felixstowe Museum**
- 21 Research Corner (7)**
- 23 Felixstowe Radio**
- 24 Planning Applications**
- 26 Programme 2009 & part 2010**

**Registered Charity No. 277442**

**Founded 1978**

**Registered with the Civic Trust**



# The Felixstowe Society

The Felixstowe Society is established for the public benefit of people who either live or work in Felixstowe and Walton. Members are also very welcome from the Trimleys and the surrounding villages. The Society endeavours to:

**stimulate public interest in these areas,  
promote high standards of planning and architecture  
and secure the improvement, protection, development  
and preservation of the local environment.**

**Chairman:** Philip Johns, 1 High Row Field, Felixstowe, IP11 7AE, 672434

**Vice Chairman:** Philip Hadwen, 54 Fairfield Ave., Felixstowe, IP11 9JJ, 286008

**Secretary:** Trish Hann, 49 Foxgrove Lane, Felixstowe, IP11 7SU, 271902

**Treasurer:** Susanne Barsby, 1 Berners Road, Felixstowe, IP11 7LF

## Membership Subscriptions

Annual Membership - single	£5
Joint Membership - two people at same address	£7
Life Membership - single	£50
Life Membership - two people at same address	£70
Corporate Membership (for local organisations who wish to support the Society)	
Non - commercial	£12
Commercial	£15
Young people under the age of 18	Free

The subscription runs from the 1 January.

The **Membership Secretary** is Betty Woollan, The Pines, Manor Road, Trimley St Mary, Felixstowe, IP11 0TU.

Members are reminded that the Society's booklets **The Cotman Walk** and **Walking around Felixstowe** are available from the Magpie Book shop, the Tourist Information Office, and the Reunion Gallery.

The next **Newsletter** will be distributed by the delivery team at the beginning of January.

**Editor:** Tony Hughes

## Notes from the Chairman

Welcome to our September Newsletter and I hope you have all enjoyed summer breaks or holidays this year. Of late our main breaks seem to have been to Essex (not too far) and Scotland because of grandchildren, but one year a World Cruise!! The Society's summer visits have been most successful as always and now we look forward to our autumn speaker evenings, not forgetting Beachwatch later this month, details of which are shown on page 4 of this Newsletter.

The proposed Conservation Area in Felixstowe South was approved at the end of June. This new area abuts the current central Conservation Area. The Society has endeavoured to extend the Conservation Area since I first reported on this matter in January 2006. Many thanks must go to Robert Scrimgeour, the Senior Design and Conservation Officer for Suffolk Coastal District Council, for all his hard work in ensuring the approval of this project. Full details and map of the new area were shown in our May Newsletter.

A warm welcome to our new members: Susan Banks, John Beckett (life members), Lorna Adamson, John & Mary Brinkley, David & Linda Bunn, Maurice & Pamela Dolling and Eileen Waugh.

Sadly I have to report the deaths of Mary Holloway and the Rev Stan Davis, whose talks on Sauntering in Suffolk were a regular feature enjoyed by so many at our speaker evenings. Obituaries for Mary and Stan are included on page 4.

The 2009 AGM was held on Tuesday 19 May and copies of the Agenda and 2008 Annual Report were circulated with our previous Newsletter. I would like to welcome our new Secretary, Trish Hann and to thank Gillian Hughes for all her hard work during the last ten years during which time she was the Society's Secretary. Gillian has agreed to remain on the Committee to assist Trish in keeping the Chairman in order, a task that my wife fully supports. I would also like to welcome two new co-opted members, Linda Bunn, who is the Committee's new Minute Secretary and Keith Horn who together with his wife, Elizabeth (who is a long standing Committee member) organises our summer trips and Beachwatch. This year he also arranged our first Society Dinner in April at the Brook Hotel. This event was a great success and was attended by 66 members. It is hoped for a repeat next year. Alan Coombes, who was a co-opted member, has agreed to join the full Committee and also remains on the Planning Committee.

### **Local Development Framework Up-date**

I attended a meeting of the LDF Task Group on Tuesday 16 June which discussed Housing and Settlement Policy. General key recommendations made by the Society were taken into consideration, namely a reduction in new build houses from 1660 to 1000, such new build to be between 2010 and 2025 with reviews in 2015 and 2020 to see if such requirements were still needed. The new build would be spread over a number of sites and where possible would take place on brownfield sites (greenfield would only be used if no brownfield were available). All necessary infrastructure be accorded priority prior to new build (this will include road and rail improvement, provision for schools and healthcare, and adequate water, electricity and sewer provision).

At a further meeting I attended of the full Suffolk Coastal District Cabinet on Tuesday 7 July, the decision on future housing for Felixstowe and the rest of Suffolk was deferred

subject to further Public Consultation which will take place over an eight week period during September and October. I urge all members of the Society to let their views be known.

The Society will continue to press for a reduction in the proposed housing build in Felixstowe, the protection of greenfield sites and ensure that full consideration be given to the constraints posed by the location of Felixstowe at the end of a peninsular with limited access via road and rail. Any major housing growth must be distributed equitably throughout the district.

**Philip Johns**

## Obituaries

**Stan Davis** was born in 1926 in Stoke-on-Trent. Although as a youngster Stan was a choirboy at the local Anglican Church, he joined a friend who worshipped at Longton Central Hall in Stoke and so began his association with Methodism. His father died of heart problems at the age of 46, when Stan was a teenager. He later discovered that he had similar heart problems to those of his father – Stan often said that every day he lived beyond the age of 46 was a bonus.

Stan served in the Army during the Second World War and was sent to India. When he left the Army he came back to England and went to Handsworth College to train for the Methodist Ministry. He eventually returned to India in 1950 where he was ordained. Wyn joined him there and they were married. They returned to England in late 1955 and their son, Paul, was born early in the following year.

Stan continued as a Minister in the Methodist Church until his retirement in 1990, when he and Wyn came to Felixstowe. In his retirement Stan developed his slide shows and this is how many members of The Felixstowe Society came to know him. Whenever our programme showed that Stan was appearing, the hall would be packed out. He was the most popular of presenters. We ‘sauntered’ to many places in Suffolk seeing and learning many things many of us would not have known about before.

Stan will be sadly missed. He was a kind, thoughtful and humorous man, a Christian man, who spent his life working for others.

Condolences were sent on behalf of The Society to his wife, Wyn, and family. Susanne and Gillian represented The Society at the Service of Thanksgiving on 8 June 2009.

**Mary Elizabeth Holloway** (née Whymark) was born in Ipswich in 1940. Mary lived with her parents, John and Edna Whymark, and her younger brother Ray. Mary was educated at Cliff Lane Primary School and the The Ipswich Girls High School after gaining a scholarship.

Following further education Mary eventually became a Practice Manager at an Ipswich Doctors’ Surgery and was married to Dr Ian Holloway. Ian and Mary had two children, Guy and Kate, and was a devoted grandmother to her grandchildren.

Mary was involved in many aspects of life in Felixstowe and was the founding member of The Alzheimers Carers Support Group. She was also involved with other local organisations particularly on the medical side. Mary joined The Felixstowe Society in 1993 and was one of our group of Newsletter deliverers.

Keith and Elizabeth Horn represented The Felixstowe Society at the Celebration of Mary's life which was held at the Ipswich Unitarian Meeting House on 5 June this year and where many family and friends paid their personal tributes. Mary was a larger than life character with a never to be forgotten welcoming smile. She will be sadly missed.

## Thank You

As you may know, I stood down as Secretary at the AGM in May. I would like to thank the Committee and Members of The Society for the Reunion Gallery voucher and book token which were presented to me at the annual meeting. I have very much enjoyed the last 10 years as Secretary of The Society during the course of which I have learnt a great deal about Felixstowe and its history.

It is good to have new people take on these posts from time to time and I am delighted that Trish Hann has felt able to take over as Secretary. I am sure she will bring new ideas to the role and that is all to the good. I wish her every success.

**Gillian Hughes**

## Beachwatch 2009

**A note for your diary.** Beachwatch 2009 is on Saturday 19 September 2009 at 8.30 am.

The Society will once again be taking part in this year's Beachwatch which is organised by the Marine Conservation Society and locally by Suffolk Coast and Heaths. The stretch of beach remains the same as last year and we will be meeting on the promenade in front of Seagull and Seashell Cottages and work south towards the Pier Pavilion.

In view of the possibility of an extra high tide being forecast we will be starting this year's Beachwatch at 8.30 am and will be collecting and recording details of rubbish for about 2 hours.

Last year 12 adults and 2 children completed approximately 2 hours beach cleaning and collected 8 bags of rubbish weighing 37 kg. The area of beach cleaned was between Seagull and Seashell Cottages and the Spa Pavilion.

PLEASE join us if you can. Even if you can only come along for a short time you will be most welcome. **If you would like to help with this worthwhile event please phone me on 01394 270845 or email me on [kjandehorn@btinternet.com](mailto:kjandehorn@btinternet.com)**

**Keith Horn**

# Annual General Meeting 2009

The following officers were elected:

Chairman – Philip Johns  
Vice Chairman – Philip Hadwen  
Secretary – Trish Hann  
Treasurer – Susanne Barsby

The following Committee Members were elected:

Alan Coombes, David Crawford, Judith Hedges, Elizabeth Horn, Gillian Hughes and co-opted members Linda Bunn, Keith Horn and Malcolm Stafford.

Peter Brown was elected as the Honorary Auditor.

Gillian Hughes stood down as Secretary but remains a member of the Committee. A presentation was made to Gillian in thanks for her 10 years service as Secretary.

## **Award for the Enhancement of the Environment**

Three Awards were made this year, one Main Award and two Commendation Awards. Facsimiles of the Awards and photographs are on the following pages.

### **Main Award for Kiligarth Court (Felixstowe) Ltd**

The Committee was most impressed by the care taken in renovating this Victorian building. The properties, including the two cottages, had been sensitively designed with many of the original features having been incorporated into the refurbishment. This newly completed building fitted very well into the Conservation Area.

Adrian Waterhouse-Taylor, Gary Miller and Andy Gray attended to receive the Award. The architect for this development, Robert Allerton, was unable to attend, but his assistant, Chris Kyle, attended to represent the practice.

### **Commendation Award for Café Bencotto**

The Committee welcomed the care taken to restore and reuse most of the original front of this historic fire station building. The completed refurbishment had produced a popular eating venue for this part of Hamilton Road.

Tim Yeo attended to receive the Award.

### **Commendation Award for the Extension to the West End of St John's Church, Orwell Road**

The Committee thought this extension had provided excellent facilities of meeting room, kitchen and toilets for St John's Church. They were particularly pleased to see that the extension windows complemented those of the Church.

Richard Holland, Churchwarden from St John's, attended to receive the Award.

Following the AGM, David Tolliday gave a talk on 'Colonel Tomline, an alternative view!'. This talk is reported on page 11.

# The Felixstowe Society



## Award for the Enhancement of the Environment

presented to

*Kiligarth Court (Felixstowe) Ltd.*

for the

*Redevelopment of Kiligarth Court*

*Architect: Robert Allerton*

**Philip Johns, Chairman, 19 May 2009**



# The Felixstowe Society



## Commendation for the Enhancement of the Environment

presented to

*Café Bencotto*

for the

*Refurbishment of  
128 Hamilton Road*

Philip Johns, Chairman, 19 May 2009





# The Felixstowe Society



## Commendation for the Enhancement of the Environment

presented to

*Saint John's Church, Felixstowe*

for the

*Extension to the west end of the Church.*

*Architect: Simon Merrett, Volute Design Ltd. of Leiston.*

*Builder: Robert Norman Associates Ltd. of Framlingham.*

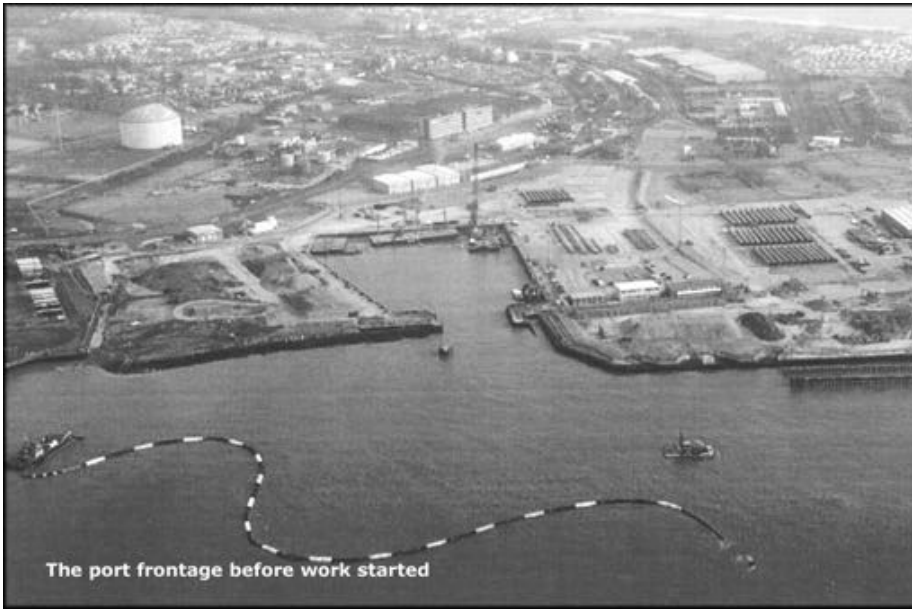
**Philip Johns, Chairman, 19 May 2009**



# Recent Developments at the Port of Felixstowe and Future Plans

Talk by David Alefs on Tuesday 24 March 2009

Unsurprisingly St Andrew's Church Hall was packed with members and visitors for the talk by David Alefs, Civil Engineer and Project Director for Costain Ltd who gave a very technical, but none the less most interesting, talk on the Felixstowe South Reconfiguration



Phase I from the Landguard to the Dooley Terminals. This project represents the largest deep water container port in the UK, so it is very important to the economy of the country. The total area of the container yard to be created from the development is 35 Ha which is equivalent to 42 full size football pitches. He explained that the employer is Felixstowe Dock and Railway Company a

wholly owned subsidiary of Hutchison Whampoa. The workforce at the moment stands at 210 and peaks at 300. Some are local, though many are not, but seem to be happy working on such a vast project and most are hopefully helping the economy in the town. The project is contracted to be finished by December 2010 and at the moment it is a third of the way through the 966 days of the first phase. The cranes are commissioned from 1 March 2010 and the final quay handover should be September 2010. Phase I consists of 730 metres of quay (the same length as 73 double decker buses back to back) and Phase II will consist of 1,350 metres of quay. At present Costain is only responsible for Phase I; Phase II will depend on the economy over the next couple of years. But as everything is getting bigger; ships, cranes etc. the second phase will be necessary providing money is available from Hutchison Whampoa.

The first delivery of piles arrived on 22 December 2008 and the pile driving which can be heard over the whole of the town should be finished by the end of October 2009. The main challenges are the sheer logistics of a project of this size. The tubes are 2.56 m diameter, 38 m long x 19 mm. They weigh 60 tonnes and arrive from Corus in Holland 19 to a ship once a week. In all there are 322 to be put in. They have to be unloaded onto the quay and then back onto the barges to be placed back in the water. Driving such large diameter piles in a marine project is a first in the UK. The piles are knocked in with a percussive hammer – one of the quietest on the market, though quiet and percussive hammer don't really go together. The hammers being used weigh 57 tonnes and are supported using 400 tonne barge mounted cranes. Piling is from 8.00 am to 6.00 pm in the week and 9.00 am to 1.00 pm on Saturdays and is allowed for 5 hours per day between those times. The area behind the wall will then be filled with 3 million cubic metres of sand, dredged

offshore by specialist sub-contractor Westminster Dredging. The wall is coming out on the Harwich side and dredging will start there in April and continue for 3 – 4 months. Soft removal goes to an offshore tip and the silt floats away with the tide. Clays are deposited on the sea bed and don't float away. In a bid to reuse as much material as possible a major crushing operation took place, crushing over 10,000 cubic metres of material which will be used as fill material for the reclamation.

We saw many aerial photographs of the site during development and pictures of the equipment being used in the project. The dock basin is almost filled up now and there is a lovely beach at low tide. There were many questions at the end demonstrating the interest in the project and its importance to the town. Our thanks to David Alefs for such an interesting evening and helping us to understand the magnitude of the work being carried out.

**Susanne Barsby**

## **Colonel Tomline – an Alternative View**

### **Talk given by David Tolliday on Tuesday 19 May 2009**

Our presenter, David, is a prominent local historian who has lived in Felixstowe since 1945 and his talk pointed out the many inconsistencies in Tomline's life.

Colonel Tomline is often labelled the founding father of Felixstowe but he was **not** a Colonel. His father had held the honorary title in the Lincolnshire Militia.



They were an immensely rich family. Having been born with a "silver spoon" in his mouth Colonel Tomline was educated at Eton where he met many future important and influential people. In later years he was courted by both Gladstone and Disraeli to be a running mate to them in General Elections.

He was an undistinguished Member of Parliament for 22 years being elected in 1840 for Sudbury (where he bought his seat and was unopposed) and then moving to Shrewsbury and on to Grimsby. He first sat as a Conservative and later as a Liberal.

Tomline came to Suffolk in 1874 and in 1880 he stood as MP for Harwich and took the stance of "Why build a dock at Felixstowe". He lost the Harwich by-election and swore he would pinch the trade from Harwich. So in 1881 he started building Felixstowe Docks.

During his years in Suffolk he purchased the Orwell Park Estate and extended this to include

most of the Manor of Walton cum Trimley, owning much of the land in the Colneis Hundred.

He was, however, an autocrat of considerable proportions and despite having a genuine 'social conscience' he did much to prevent the development of the area and Felixstowe in particular.

After election to the first Felixstowe Local Development Board in 1887 he was made its first Chairman and until his death two years later from a suspected heart attack, he did his best to stop his fellow councillors from doing anything. For the most part he was successful, blocking the building of any new roads, the installation of street lighting, the provision of running water or sanitation and drainage.

On his death in 1889 an attempt by his four supporters on the Board to write a testimonial and endow a memorial to him was defeated by his colleagues who said 'they honestly believed that Colonel Tomline was the means of keeping back progress and improvement of Felixstowe'.

## **Philip Johns**

### **Cruise on the River Deben and visit to Woodbridge**

Wednesday 17 June turned out to be quite a nice day weather-wise for our cruise on the River Deben – not too hot and not too cold, with the water quite smooth. We travelled by coach from Felixstowe to Waldringfield where we boarded M V Jahan. Our trip was from Waldringfield to Felixstowe Ferry and back. As we made our way up the river we had a running commentary of the many places of interest.

In the late 19<sup>th</sup> early 20<sup>th</sup> centuries Waldringfield had cement works. Mason's Barges brought coke and chalk from the Thames to the jetty and returned with cement. In 1921 Harry Nunn started boat building on the quay and later Nunn Bros built yachts at Waldringfield. Coprolite was shipped from the beach until all the Deben side pits closed in 1893. Today Waldringfield is known as a very pretty sailing village with the well known Maybush Inn.

Most of the villages on the banks of the river have the remains of the old Barge Quays from which the farm produce was shipped to the towns and cities. In 1760 the Ramsholt Estate started an oyster fishery in the old Shottisham Creek. After a big tide in 1904 broke through most of the Deben river walls this creek mouth was walled off. Ramsholt Church could be seen up on the hill. It has a flint built oval tower and dates from the 12<sup>th</sup> century.

Kingsfleet and Felixstowe Ferry are now the only vestiges of the vast harbour known as Gosford Haven, which occupied the south bank of the river in the Middle Ages before about 1500. It extended through creeks and marshes right as far as Hemley and was known as Kingsfleet because it sheltered the warships of medieval kings. Edward III assembled his expeditionary fleet within this harbour in 1346.

In 1802 Lord Nelson visited Felixstowe Ferry and gave £5 towards a lifeboat.

Opposite Felixstowe Ferry is Bawdsey Manor built in 1886. In the late 1930s it became the home of research for the invention of RADAR. Nowadays the River Deben is mostly known for its leisure pursuits of sailing and cruises.

During the course of our cruise we enjoyed a glass of sherry and a ploughman's lunch. Having reached Felixstowe Ferry we retraced our route along the Deben back to Waldringfield. It was a delightful trip, very relaxing and interesting. Once back at Waldringfield we boarded the coach for Woodbridge. We had around two hours to stroll through this market town. Most of us would have visited Woodbridge before, but it was pleasant to be able to wander in and out of shops which had a particular interest and perhaps to make one or two purchases. A number of us were able to buy an ice cream just before boarding the coach again which finished the day off nicely.

It was what I would call a 'gentle' day, a calm cruise on the Deben, a pleasant lunch and a nice wander around Woodbridge. Our thanks to Keith & Elizabeth for making all the arrangements.

**Gillian Hughes**

## **Music in Felixstowe**

In recent years Hattie Bennett, who lives at Felixstowe Ferry, has been trying to improve the opportunity to enjoy musical concerts in Felixstowe. For some time now monthly concerts have been arranged on a Sunday afternoon at St Andrew's Church (with occasional concerts at St Nicholas, Felixstowe Ferry). In order to increase the awareness of these concerts details will be given in future Newsletters so that those members and friends who are interested can go along and enjoy a Sunday afternoon of music.

The dates for the next Season are:

- |             |  |
|-------------|--|
| 6 September | Solo Bach recital by Roland Roberts, who is currently recording a CD of Bach's unaccompanied violin works. |
| 4 October   | Piano trio – Nick Ward violin, Harriet Bennett cello and Tim Carey piano.                                  |
| 8 November  | Cliff Wybrow clarinet, and friends.  |
| 6 December  | Christmas concert including the Octet and seasonal favourites.   |
| 3 January   | Concert by the Ward Quartet.   |
| 24 January  | Cellos by Candlelight at Felixstowe Ferry Church (St Nicholas).  |
| 7 February  | Brahms Sextet in G major and Mozart Viola Quintet in C led by Mark Messenger.                              |

All concerts are at St Andrew's Church unless otherwise stated. The concerts start at 3 pm and entrance fee is £10 – children free.

**These thoughts by Malcolm Stafford on the curious world we live in arrive by email and the following is just a sample. There will be more in later editions of the Newsletter.**

## **Moveable Feasts**

I have just read a most interesting book, well to me it was interesting. When I told my family what it was about, they were not as enthusiastic about the subject matter as perhaps I was.

The book is called 'Moveable Feasts' and is about the travel of food, from olive oil that we buy in the bottles of Italian companies, that actually started its journey in Spain to Norwegian salmon that is shipped at 9.4 degrees Fahrenheit to the home of Qindao beer in China, where the salmon is defrosted, skinned and bones removed before being refrozen and sent back to Europe.

The author Sarah Murray also describes how the military have improved the efficiency of feeding troops and the futuristic proposals to not feed troops at all ! There is also an interesting chapter on the Berlin Airlift and another on the delivery of American corn literally by air to Darfur.

For me the most fascinating chapter was the delivery of tens of thousands of meals cooked by the wives of workers and children every day all over Mumbai (Bombay). Highly recommendable.

ISBN-13: 978-0-312-35535-7 Moveable Feasts by Sarah Murray St. Martin's Press.

## **Air or Train ?**

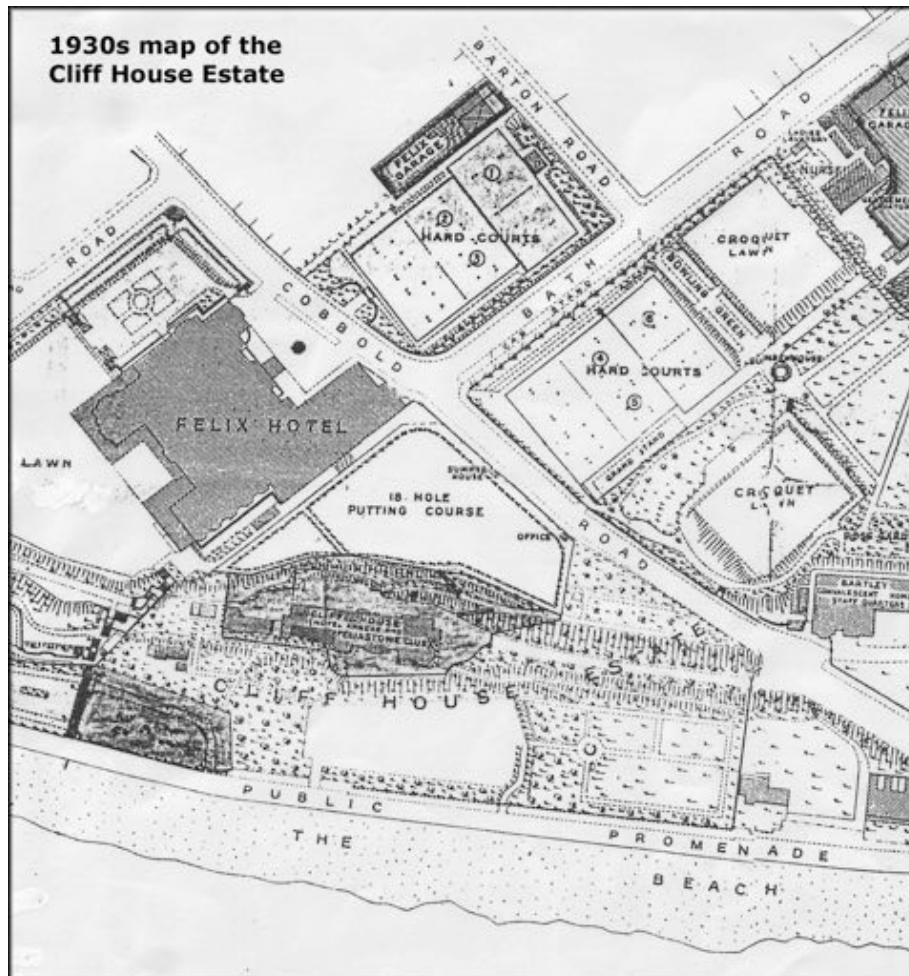
It may surprise you to learn that there maybe a growing trend for passengers to switch from air to train. Well that does seem to be the case in the United States and Mainland Europe. In Paris and Frankfurt for instance the train service is used by airlines for code sharing (an aviation term for journeys operated by one carrier but publicised by others) to reduce uneconomic short-haul flights.

Between Brussels and Paris there is now only one flight each day and Air France sends all their passengers by rail between the French and Belgium capitals using an integrated ticket. In Germany passengers can book in their bags at Stuttgart and Cologne railway stations to airports worldwide via Frankfurt airport, thanks to cooperation between German Railways, Frankfurt Airport and Lufthansa. In America, Continental Airlines withdrew all flights to Philadelphia and now sends passengers using a code-share with Amtrak Rail.

In the country of precision railways, passengers traveling to Switzerland can check their bags through from their departure airport to any of 116 major Swiss railway stations and on their return journey check their bags from these stations to their home airport and from many stations get their boarding card too !!

Meanwhile in Britain there is opposition from the aviation industry to proposals to downgrade The Gatwick Express to a commuter service and there are threats to the reliability of The Heathrow Express as it is difficult to schedule dedicated trains into the busy London to Brighton main line route.

## Cliff House Estate, Bath Hill, Felixstowe



If you stand in the east car park of Harvest House in Cobbold Road facing the sea, the roof of a building is immediately in front of you. This building houses a cafe together with some residential accommodation, but was once closely associated with the Cobbold family and also had links with the Felix Hotel.

Cliff House, as it was called, was the residential part of the Cliff Estate, which consisted of four and a half acres (almost two hectares) of land bounded by the promenade, Cobbold Road and Bath Hill. On the estate as well as Cliff House there were several outbuildings, all now demolished.

The early deeds of Cliff House cannot be found, so the date of the construction of the House is not known, but John Chevallier Cobbold (1797-1882) is recorded as living there as early as 1840. Some time later he moved to live in Felixstowe Cottage which following his death, was replaced by a larger house, designed by Thomas Cotman and renamed Felixstowe Lodge. In 1927 it was sold to Uplands College, later Felixstowe Ladies' College, and became Cranmer House, its name today.

John Chevallier Cobbold was MP for Ipswich and owned a considerable area of land from the Lodge westwards, parallel to the beach. Cobbold Road is named after him and two other roads in the area also commemorate the Cobbold family - Thornley and Chevallier,

(although in the latter case the street sign is wrongly spelt). He was also responsible for the building of the Ordnance Hotel in 1854.

In 1876 Colonel Henry Jervis-White-Jervis RA MP, with his wife and seven children, moved from Layham, near Hadleigh to occupy Cliff House. The Colonel died in 1881 and the lease of the house passed to his widow.

Prior to her marriage she was Lucy Cobbold, and she formally opened the Croydon Cottage Hospital in 1910 owing to the death of her brother Felix Thornley Cobbold the previous year, who was to have performed this ceremony. Following that death the new resident of the Lodge was his nephew, John Dupuis Cobbold (1861-1929).

However, early in 1916, Mrs Jervis-White-Jervis also died, and Colonel Christopher Barnes, took up residence. Colonel Barnes was a Cobbold relative, and one of two nephews of Dr John Bartlet, who were the two principal beneficiaries in his will.

In 1920 John Dupuis Cobbold wrote to the Felixstowe Urban District Council offering the Cliff Estate for sale, but the Council refused the offer to buy.

In 1923 Cobbold wrote again, and since Colonel Barnes was leaving Felixstowe, offered to sell only the land in front of the house. Cobbold explained that he wanted £15,000 for the whole estate, but that if the owners of the Felix Hotel wished to buy the house the Council could negotiate with them.

By February 1924 the Council again refused the asking price, and Cobbold gave directions for the property to be put up for auction. The auction was advertised by Garrod Turner the auctioneers, to be held in the Felix Hotel in August of that year, the solicitors being Cobbold, Sons and Menneer.

The details given were that the house comprised, on the ground floor, a large entrance hall, four reception rooms with one leading to a conservatory, as well as a servants' hall, pantry, kitchen, scullery, larder and servants' toilet. On the first floor were seven main bedrooms and on the second floor another three good ones. Two boxrooms and two attic bedrooms were also available.

A number of outbuildings were listed included in the sale including a double carriage house, harness room, garage, coal house, boiler house and two glass houses.

In November 1924 it emerged that Dr Paul Giuseppi, a local medical practitioner, who was Chairman of the Felixstowe Urban District Council, had secured an option to buy the house, outbuildings and just three acres of the grounds for £9,000.

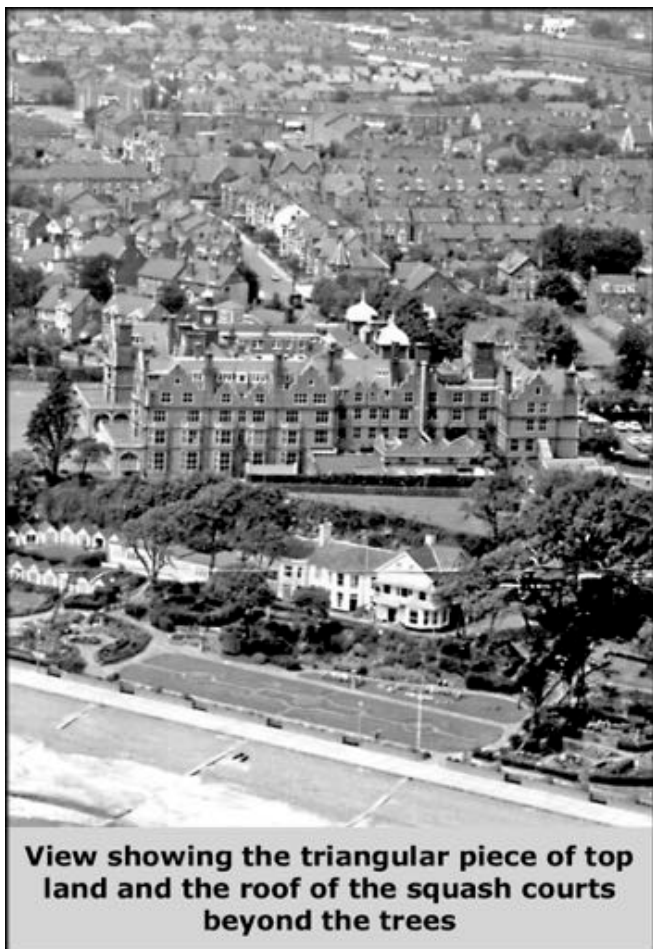
He would pay £4,000 for the house only, which would be used as a nursing home, provided that permission was received from the Ministry of Health, the Council paying the balance of the money.

The proposal to use the house as a nursing home was later abandoned, and the purchase of the entire estate by the Council was completed in March 1925.

In April the new owner of the Felix Hotel, the London North Eastern Railway Company, (LNER) (the successor to the Great Eastern Railway Company) made an offer to buy the



so-called top land for £1,000, but the Council resolved only to lease both the top land and the house, and retain the strip of land at the side of the promenade.



Later this decision was revoked so far as the top land was concerned, and the sale to the LNER went ahead, with completion in January 1927. The railway company then established the area as an 18 hole putting green, open not only to Felix Hotel guests, but also to the public.

In the 1930s the LNER built a block of squash courts on this land, with a bridge connection to the Felix hotel, and when Harvest House was converted to domestic use in 1985, the land became the east car park, 14 garages and a nine hole putting green. The squash courts became four apartments attached to the house, called Felix Lodge.

The land in front of Cliff House, next to the promenade, was kept by the Council as public gardens, which it remains to this day.

In June 1927 the Council was faced with a request to use Cliff House for a boarding school, which they rejected.

Negotiations between the railway company and the Council over the terms of the lease for Cliff House were prolonged, partly because the negotiators - the Estates Committee of the Council and the LNER representative had respectively, the full Council and the Board of Directors of the railway above them. A further slowdown was caused by the discovery of a serious degree of dry rot in the floor and joists in the dining room of the house.

It was not until December 1927 that the lease was granted, and the leased house became the Felixstowe Club and Hotel Annex.

The Club was open primarily for residents of Felixstowe and offered a bar, food, a card room and billiards' room, and a well-appointed reading room. So-called 'country' members were welcomed and the Club was open to the guests of the Felix Hotel.

A flight of steps was constructed down the cliff so that hotel guests could walk along the path by the putting green and use the steps directly down to the front door of Cliff House. Little remains of these steps today apart from one or two rusty former handrails.

The Club was also of use to the management of the Felix Hotel in the peak season, when it was necessary to increase the number of waitresses by sending them down from the



**Present day view of sea facing aspect of Cliff House**



**Cliff House showing extension and first line of the attached chalets**



**The main entrance to Cliff House**

Great Eastern Hotel in the City of London. The waitresses lived in the upper storey rooms of the Club.

The lease on Cliff House expired in June 1933 and the Council offered the LNER a renewal for 7 years at £175 per annum. War broke out in September 1939 and when the lease period was close to expiry in June 1940 the Council offered a renewal for three years only, and this was agreed. When this extension expired in June 1943, it was not renewed.

Late in 1943 the council agreed not to entertain any proposals for the use of Cliff House until post-war reconstruction had been agreed, except that in January 1944 they did agree for its use for the storage of Council property.

In November 1946, and the war over, a plan was put forward for a conversion of the house to include a cafe seating 80 persons, a caretaker's flat and a reading room. This last however, was turned down by the County Council which refused to support it by supplying the necessary magazines and newspapers.

Today the house is still in use, but with a line of chalets immediately adjacent, the cafe is still in use as the Clifftop Tea Rooms, and the rest of the house, extended at the western end, consists of Council rented domestic properties.

### **Acknowledgments**

I wish to acknowledge with thanks the kindly assistance given to me by Mr Anthony Cobbold, Mr Simon Burrige, senior solicitor of Suffolk Coastal District Council, the Manager of Felixstowe Public Library, and the staff of the Ipswich Record Office.

### **Leslie Ramsey**

## **Felixstowe Museum**

The Museum is a fine place to visit for all ages and hopefully is on several people's itinerary this Summer. Being adjacent to the Viewing Point at Felixstowe Dock makes us very accessible and many of our visitors enjoy both the views across the Orwell and the local history that we have on offer.

Recently we were honoured to host a reception for the Coastal Forces Heritage Trust, who had unveiled a plaque at Landguard Point Viewing Area to commemorate those who served in Coastal Forces at HMS Beehive during World War II and to remember the many who sailed from Felixstowe and never returned. It was a very special day and it was wonderful to see the old campaigners, with their countless medals, retelling their memories to seldom-seen colleagues. This day has drawn greater attention to our HMS Beehive room.

The recent centenary of the Spa Pavilion received much publicity locally and we were delighted to contribute. The exhibition dealing with the history of the Felixstowe Spa and the Spa Pavilion, as well as several related items of memorabilia that were loaned to the Spa, is now back at the Museum.

We look forward to seeing you sometime in the near future.

Our Winter series of speakers begins on Wednesday 21st October when Captain Roger Jenkins will give a graphic account of his and his ship's experiences during the Falklands War. This is followed by an illustrated talk by Phil Hadwen on the history of Felixstowe Spa and the Spa Pavilion on Wednesday 18th November. Both these meetings will be held at the Town Hall and will begin at 7-30 pm. Members are free and visitors are charged £2. It is certainly worth becoming a member for £3 because not only do you get free entrance into the Museum, but you get the 5 speaker evenings free and twice a year a newsletter keeps you informed of what's going on. Surely excellent value. Contact the Museum on 01394 674355 or come and see us!

**Supplied by Felixstowe Museum**

## **Visit to Felixstowe Museum – Tuesday 6 October 2009**

We have arranged a private visit to Felixstowe Museum which is situated between Landguard Fort and the Harbour Viewing Area on Tuesday 6 October commencing at 2.00 pm.

The visit costs £2.50 and includes tea/coffee.

The Felixstowe Museum is an excellent place to visit. It now houses 14 rooms of artefacts displaying military and social history of our popular seaside resort. The building itself is of historic interest as it was once a submarine mining establishment. There is a special exhibition relating to the history of the Spa Pavilion which is well worth seeing.

**If you would like to attend please telephone me on 01394 270945 or email me at [kjandehorn@btinternet.com](mailto:kjandehorn@btinternet.com) to book your place.**

**Please note that numbers are limited.**

We will meet at the museum at 2.00 pm (there is ample car parking space). For those people without transport who would like to attend please let me know and I will try to arrange transport for you.

Payment can be paid to me on the day of our visit.

**Keith Horn**

## Research Corner (7)

When people think of research they generally believe that the researcher spends long hours diligently searching ancient records. The long hours are often true, but research doesn't have to be all in the past, it can involve the present!

When you talk to some of the older inhabitants of Felixstowe they have a tendency to want to tell you about the shops and businesses in Hamilton Road that they can remember. One reason they are so accurate is that about 25 years ago there was little change to our main shopping area, but today it seems that every time I visit Hamilton Road there has been a change! The latest as I write this is Brown's, the kitchen shop.

One recent topic of conversation has been about the number of coffee and tea outlets in and around Hamilton Road, and without any further thought I spent quite some time listing the shops in our main shopping area. I was going to just record the drink establishments, but with several changes recently I considered it useful to have a complete list for future reference. Having made this list it was easy to count and list separately the beverage emporiums. In all there are 22 places where a beverage may be purchased!

This list starts at The Alex and goes up Hamilton Road to the Orwell Hotel, but includes the premises in Orwell Road and The Crescent, which are almost adjacent to the main street. I must admit that I haven't included the churches on this route, but I do believe that Trinity Methodist, the Salvation Army and St Andrew's are all open at some time during the week for tea, coffee or a chat and guidance, 22 and counting seems a mighty large number of outlets considering that until reasonably recently these shops were few and far between.

Maybe we can all go back through the memories that we have of retail outlets in Hamilton Road. It doesn't seem long since I was drinking coffee in Nuts'n Honey at the top of Bent Hill, but this is now Ruby's Kitchen. But I'm sure there are several of you who can remember the La Continentale coffee bar on the same site. And while we are back in the 60's what about the café above Fine Fare (now Iceland)!

So the idea of tea shops and coffee bars is not a new phenomenon, it's just that we seem to have more than we can cope with! Maybe I'm being hard, but I do wonder how many of these will still be in business in 5 years time. Since Christmas we have already lost Froffee Coffee and Tchibo, replaced by The Triangle and Coffee Republic, and for a short time Brown's had a small café above their main shop. The first cafés and restaurants were on the sea front to cater for the holiday trade, but as the town centre developed so the cafés arrived. At the beginning there were just a few.

It must be remembered that our town's shopping area basically developed from the top of Bent Hill up to the top of the town. The Orwell, and the Town railway station, did not appear until 1898. The lower end of Hamilton Road was named Victoria Parade. Orwell Road seemed to be where the refreshment establishments were first established in the actual town. One of the first and certainly one of the most interesting was **Pietro Teani's** Refreshment Rooms at number 12 (now the site of Exclusive Interiors). It was here that the first Catholic mass was said in Felixstowe by Father William Cooper, the first parish priest, on Sunday 9th July 1899, with a congregation of 6.

By 1929 there was Miss W Standley's Corner Tea House (on the corner of Stanley Road), Misses Donaldson and Baynes Tea Rooms (corner of Victoria Street and now the fish

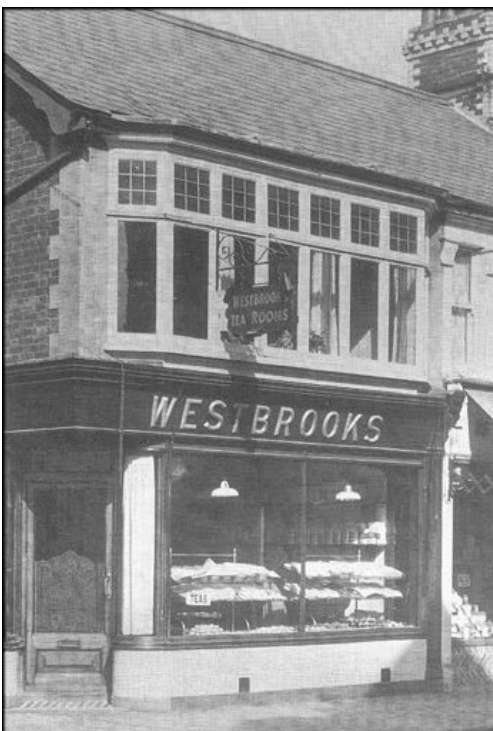


shop) and next to St George`s Church was the Leopard Tea Rooms, owned by Mrs Daldry. In Hamilton Road there was Cordy`s Restaurant at 19 Victoria Parade, Slack`s Hamilton Café (above the Woolworth`s site) and Madam Louise, `The Westminster Café`, next to the bank of the same name.

By 1938 **Fellas** Bros. had opened at 7 Hamilton Road, 67a was Mason and Marshall café, **Westbrook`s** was at 71 (now Hughes), Percy Dowsett was serving refreshments at the Town railway station and there was always the Orwell. The Orwell Road site on the corner of Victoria Street was now Mrs I M Figgis`s `Our True Intent` Tea Room. There was a Bent Hill Café, but whether this was at the top or bottom of Bent Hill I am not sure.

In the 1949 Felixstowe Official Guide there is an advertisement for White House Café at 6 Hamilton Road, but there has been no other reference to this café that I can find.

1954 sees 67a as The Pandora café owned by Mrs Marjorie Wainwright, The Central Café had opened at the corner of The Crescent, 117 was Hamilton Restaurant (props Quinton and Harrison) and at number 86 was Harvey and West café. In Orwell Road number 17 was Mrs Hadkin`s milk bar.



In 1965 we had **Jane`s** café at 86 Hamilton Road, and in Orwell Road there was Sands Espresso Coffee Bar at number 32, with the Maycock café at number 17. (This became a café run by A Richardson in 1969 and the Orwell Grill a few years later).

The seventies sees the Wimpy bar opening, there is the Bencotto Steak House on the site of the old Fire Station, and at 152 Hamilton Road there was Lesley`s restaurant.

These are just those that can be found in local directories and there must have been more.



As of 20th July 2009 the following is a list of our retail outlets selling tea, coffee and other refreshments: - The Alex, Ruby`s Kitchen, Cornelian, Sangha, Compton`s, Baker`s Oven, The Sandwich Shop, Caffé Nero, Wimpy, Coffee Republic, Subway, Caffé Libra, Oaks Tea Room, The Triangle,, Continental Caffé, Bencotto, Hamilton`s, River of Life, Favorite (chicken and ribs), Co-op coffee shop, Chuffers and the Elizabeth Orwell.

It is comforting to know that we have more churches in our area than cafés in and around the town centre!



It would be great to hear of any memories that our members have of these establishments, or any that I may have missed.

**Phil Hadwen**

## Felixstowe Radio

**felixstoweradio**  
a new community radio station for Felixstowe.

**107.5 FM**

- open to everyone
- make and record your own programmes
- broadcast live on FM
- sell your original cds in our shop
- reach your local community with issues that matter to you
- play your own music
- publicise your band
- all training given
- have some fun



come and visit us at:  
**3 Great Eastern Square**  
or call: **01394 282123**

[www.felixstoweradio.co.uk](http://www.felixstoweradio.co.uk)

felixstoweradio is a  
Community Interest Company

**On Tuesday 26 January, Trevor Lockwood and his team will give a presentation to The Society.**

**Felixstowe Radio goes live on September 5, 2009.**

# Planning Applications

## 26 March to 22 July 2009

**SCDC has GRANTED permission for the following:**

### *Previous Applications*

**York House, 2-4 York Rd:** Replace windows and door.

**Flat 2, 23 Bath Rd:** Erect porch and replace render and 2 doors and 4 windows.

**Land between Orford Rd, Langer Rd and Manor Terrace, South Seafront – Renewal:** Construct a Maritime Park, 158 dwellings with associated works.

**Latimer House, Martello Lane:** New Garage and Store.

**Sea Bank, Felixstowe Ferry:** Retention of first and ground floor extensions as built.

**7 Mill Lane:** Amendments to Planning Permission C07/2080.

### *Recent Applications*

**11 Picketts Rd:** Erect side extension to link outbuildings to house, erect new pitched roof over extension. The Society objects to this extension. It will unbalance the appearance of this imposing and distinctive residence. Following the guidance of SPG 16, Section 4.1, this extension fails to respect the character and symmetrical design of the original building. In our view, any extension on one side of the building should be balanced by a similar extension on the other side to retain the symmetry. We suggest that any extension be placed to the rear of the building or set back behind the arched entrance.

**114 Ranelagh Road:** Single storey extension. The Society objects to this Proposal for the following reason. The proposed extension is an unsympathetic addition to this house which occupies a corner site within Felixstowe's Conservation Area.

**Part side garden, 67 Tomline Rd:** Erect new dwelling. The Society continues to object to the loss of open garden space. However the design of the new property is sympathetic to and will have little effect on the Conservation Area.

The following will have little effect on the Conservation Area:-

**23 Gainsborough Rd:** Erect Conservatory.

**The Salvation Army, Cobbold Rd:** New entrance portico and minor elevation changes (revised).

**55 Ranelagh Road:** Single storey rear extension.

**41 Cobbold Rd:** Single storey rear extension.

**Flat 19 Martello Place:** Replacement of window on southern elevation.



## **Applications awaiting a Decision**

**22A & 22B Felix Rd:** Continued use of buildings as artist studio with ancillary storage and domestic storage. We believe that this Application will have little effect on the Conservation Area.

**Community Hospital, Constable Road:** Erect timber storage. We believe that this Application will have little effect on the Conservation Area.

**Garage site, Langer Road:** Erection of dwellings and alteration to existing access (Details following outline (permission in 2008). The Society objects to this Application. There are too many houses for the site and the design is too high and overbearing on adjacent properties. In our view the current design is a poor use of the space and unsympathetic to the other houses. We question the need for such a high ground floor when we understand the minimum flood protection height of this area to be 1.5 metres.

We suggest that with 3 slightly larger houses there would also be sufficient space for parking on site. Removal of the garages from under the building would reduce the excessive height and a reduced build would give more living space to future occupants – the current room sizes seem small.

**59A Tomline Road:** Erect a shed at the rear. We believe that this Application will have little effect on the Conservation Area.

**Villa Bonita, Maybush Lane:** Erect one & a half storey side/rear extension. These alterations will have little effect on the Conservation Area provided the design and materials are sympathetic to the existing building.

**1 Kiligarth Court, Wolsey Gardens:** Resubmission of proposal to enclose in the existing porch. These alterations and the design could enhance and will have little effect on the Conservation Area.

## **Other Applications**

**34 Queens Road:** Convert one dwelling to two and erect an attached third dwelling. This Application was REFUSED in March!

**Spa Pavilion:** Erect 11 signs. Application withdrawn.

**29 Felix Road:** Replacement windows for Flats 1 and 2. The blank aspect of the proposed replacement windows is unsympathetic to the style of this distinctive terrace. The ground floor bay should exchange like for like. The upper floor windows should match either the ground floor or the upper windows of the adjacent No 31. For these reasons, The Society objects to the proposed window designs for this Conservation Area building. REFUSED.

**75 Hamilton Rd:** Change of non-illuminated replacement sign. This proposal will have little effect on the Conservation Area. REFUSED.

**Land to rear of 49-53 High Rd East:** Erect 3 single storey dwellings with access (existing No 49 to be demolished). The Society regrets the loss of these open spaces at the rear of established dwellings. However this outline proposal does not appear to over-develop the

site. We stress that the development should only be of single storey bungalows and we will object to any larger houses. REFUSED.

**Proposed Units 1 – 5 St Felix Home for the Blind, 58 Princes Rd:** Conversion of residential home, coach house and use of land for dwellings etc. WITHDRAWN.

**Flat 9, Felix Court, Sea Road:** Replacement windows to first floor flat. The Society objects to this Proposal for the reason given below.

The replacement windows offered do not appear to incorporate glazing bars in the upper sashes. Such glazing bars are a distinctive feature of windows in this building.

REFUSED.

**David Crawford**

## Programme for 2009

- |                       |  |
|-----------------------|--|
| Saturday 19 September | <b>Beachwatch 2009</b> . Details on page 5.  |
| Tuesday 22 September  | <b>Old Felixstowe.</b> An illustrated talk by Phil Hadwen.   |
| Tuesday 6 October     | <b>Afternoon visit to Felixstowe Museum.</b> Details on page 20.   |
| Tuesday 27 October    | <b>Felixstowe Then and Now (1) – The Reunion Gallery, Gainsborough Road.</b> An illustrated talk by the team from the Gallery. |
| Tuesday 24 November   | <b>An evening with ....</b><br>Two long-standing local residents share with us their memories of Felixstowe.                   |
| <b>January 2010</b>   |  |
| Tuesday 26 January    | <b>Felixstowe Radio.</b> Trevor Lockwood and his team will give a presentation.  |

All speaker meetings are held in St Andrew's Church Hall at 7.30 pm.  
Members £1 Visitors £2

**If you wish to join The Society,** remove this page from the Newsletter, complete both columns and send it to Betty Woollan at the address given on the back page with a cheque payable to *The Felixstowe Society* for the correct subscription, and enclose a stamped addressed envelope.

Full names .....

.....

Address .....

.....

Post Code .....

Telephone .....

I/We could give occasional help with -- please tick

Artwork

Archives/Exhibitions

Litter clearance

Monitoring planning applications

Newsletter delivery

Organising activities

Survey work

Secretarial work

Maintenance work at Abbey Grove and Gulpher

Pond

Have you any relevant technical/professional expertise or special interests, for example, computer skills?

.....

.....

---

**For office use only** (please tick and date)

Receipt issued .....

On Newsletter delivery list .....

**Gift Aid Declaration** (for individuals).

Please ensure that the name on the cheque for the membership subscription (donation) in the same as the donor.

*Donor details*

Title .....

Forename(s) .....

Surname .....

Address .....

.....

Post Code .....

I would like The Felixstowe Society to treat all donations I make from the date of this declaration, until I notify you otherwise, as gift aid donations.

Donor to sign and date here

*sign* .....

*date* .....

*Notes*

1. You can cancel this declaration at any time by notifying the Treasurer.
2. You must pay an amount of income tax and/or capital gains tax at least equal to The Society's reclaims on your donation in the tax year.
3. If in the future your circumstances change and you no longer pay tax on your income or capital gains equal to the tax The Society reclaims, you should cancel your declaration. See note 1.
4. If you are unsure whether your donations qualify for Gift Aid tax relief, ask The Society, or ask your local tax office for leaflet IR65.
5. Please notify The Society if you change your name or address.

## If you wish to join The Society please read on

The Society has many different activities and almost everyone can give something to, and get something from, The Society.

### Meetings

The Society holds meetings which usually include a talk on some matter of interest; arranges outings to places of interest in East Anglia; holds exchange visits with other societies.

### Projects

The Society organises exhibitions; carries out surveys; works closely with schools on various projects; monitors planning applications; tackles specific issues as they arise; gives Awards for the Enhancement of the Environment; is actively involved with Abbey Grove and Gulpher Duck Pond.

### Publications

The Society issues a regular Newsletter and has published 'The Cotman Walk' and 'Walking around Felixstowe' which are available from the places listed on page 2.

### Joining

To join The Society please complete the Form, and the Gift Aid Declaration (if relevant) on the previous page, and send it with your membership subscription plus a stamped addressed envelope for the return of the receipt to;

Betty Woollan  
Membership Secretary  
The Pines  
Manor Road  
Trimley St. Mary  
IP11 0TU

### Membership Subscriptions

Annual Membership - single	£5
Joint Membership - two people at same address	£7
Life Membership - single	£50
Life Membership - two people at same address	£70
Corporate Membership (for local organisations who wish to support the Society)	
Non - commercial	£12
Commercial	£15
Young people under the age of 18	Free

The annual subscription runs from the 1 January.

**Gift aid** is tax relief on money donated to UK charities. HM Revenue & Customs treats donations as if the donor had already deducted basic rate tax from them. The charity can then reclaim this tax to increase the value of a donation. The Society is a charity and the membership subscription is a